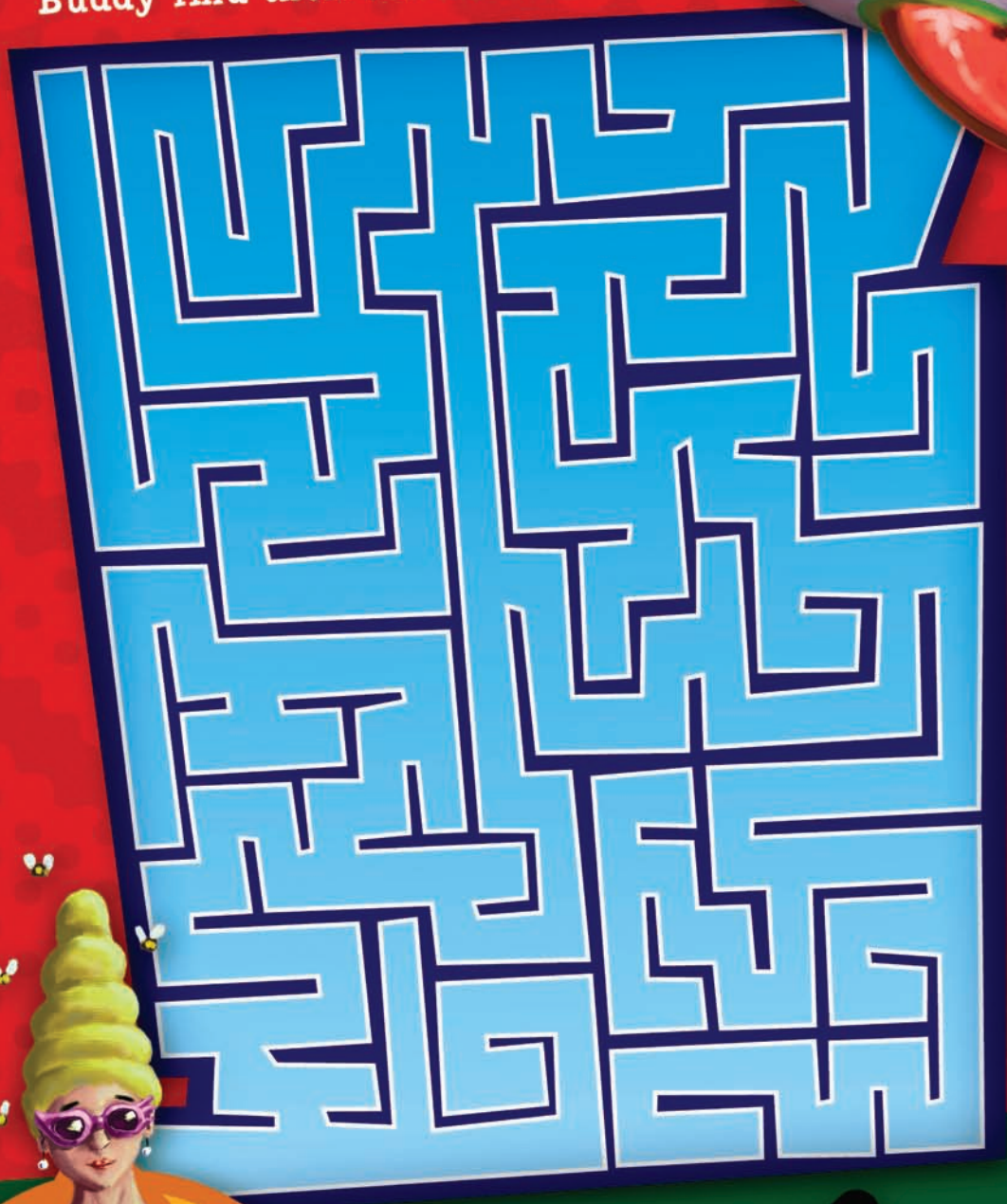


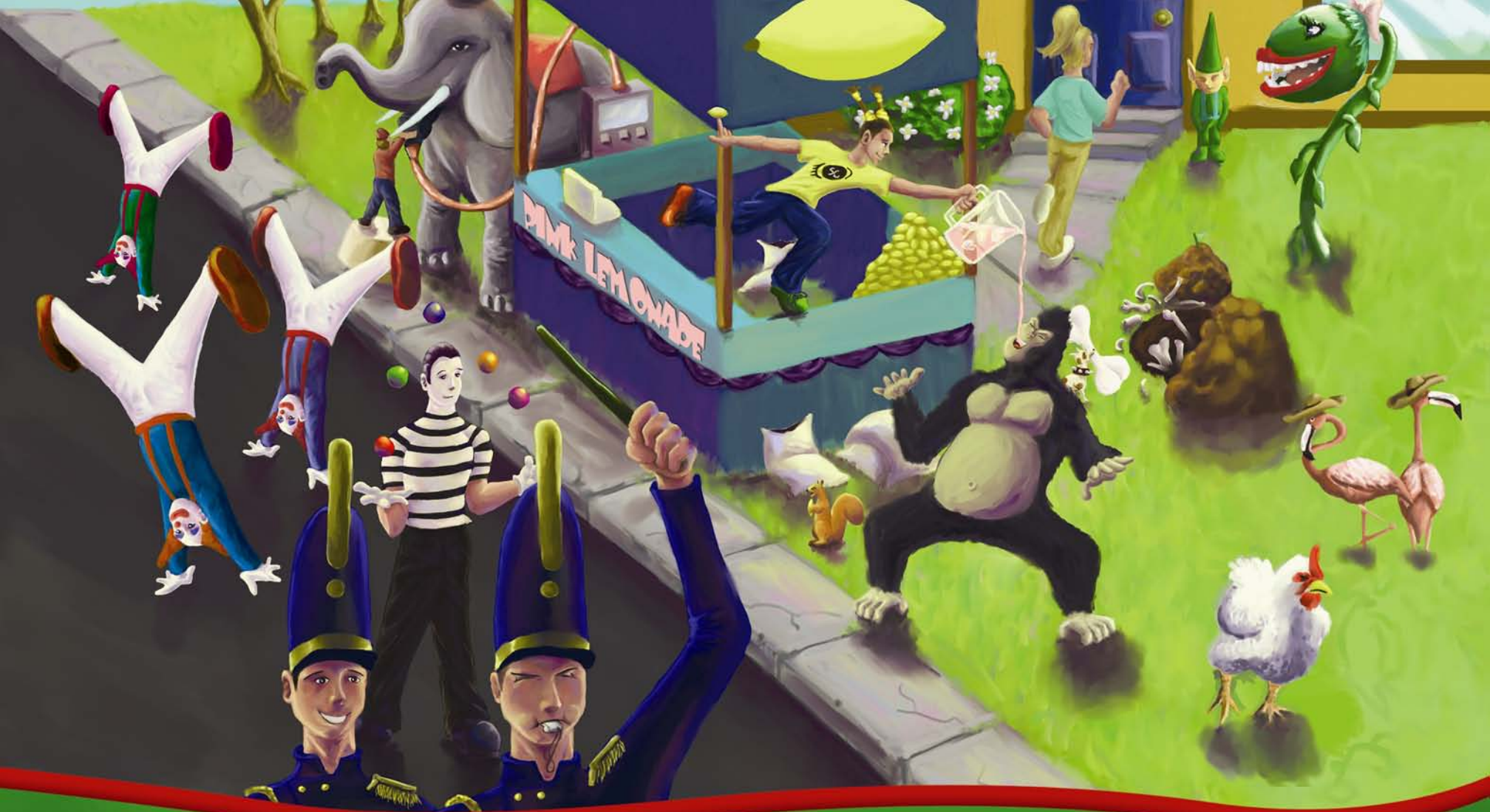
# Neighborhood Maze

Help Safe Side Superchick and Buddy find their Safe Side Adult!



**HOT  
TIP**

**STOP AND  
THINK!**  
Don't fall  
for tricks.



Never talk to  
Don't Knows  
unless your  
Safe Side  
Adult is  
with you.

# I Spy

Circle the objects in Safe Side Superchick's front yard!  
A pink bow, a red ball, a little dog, a garden elf,  
two cowboy hats, one pitcher of pink lemonade, a whistle,  
a squirrel, Safe Side Superchick's logo.

Don't let  
anyone inside  
your Safe  
Side Circle.  
Run from  
danger!

# Safety Search

See if you can find the following safety words in The Safe Side word search below.

B T E F A S W C J V Q  
U L Z N A L R Z D T X  
D U E H L T H E M B W  
D D N L V S O M M O R  
Y A E F S W H H N T C  
J E S D O N T K N O W  
B D I M P A A N O U C  
H I B R A D D L Z M V  
M S W I N R D K Y B I  
T E G I B U T M A G T  
Y F K U S Q A X S R X  
L A T X Q D F F R N X  
T S N S F P C Y X P W

Cool

Don't Know

Kinda Know

Safe

Buddy

Safe Side Adult

Smart

A Kinda Know is someone you might know, but is not one of your Safe Side Adults.

A Don't Know is any person you do not know.

# Safety Quiz

Test your safety skills! Decide if the following sentences are true or false and circle your answers below.

1. I can play outside by myself.

**TRUE FALSE**

2. I always tell my Safe Side Adult when I leave the house.

**TRUE FALSE**

3. If someone is at my door, it's always safe to open it.

**TRUE FALSE**

4. If I get lost in a store, I should find a woman who works there and ask for her help.

**TRUE FALSE**

5. Grown-ups should always ask kids for help.

**TRUE FALSE**

6. It's okay to tell a nice grown-up personal information about myself, like my name or address.

**TRUE FALSE**

7. I can always say 'no' to a person who asks me to do something that makes me feel weird or uncomfortable.

**TRUE FALSE**

Never go anywhere, with anyone, unless you ask your Safe Side Adult first.

